

RF TRANSMISSION LINE TRANSFORMER

- RF Transmission Line Transformer
- Impedance=75Ω
- Operating Temperature Range: -40°C to +85°C
- Storage Temperature Range: -55°C to +100°C
- RoHS Compliant

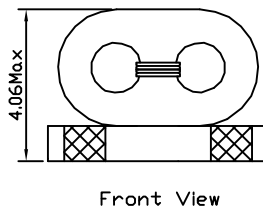
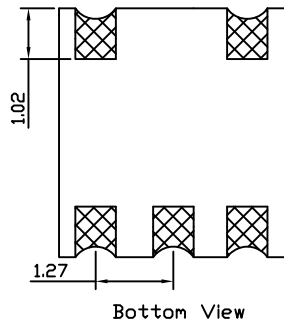
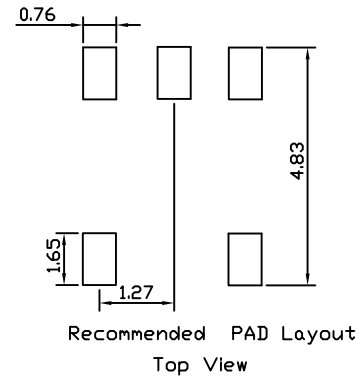
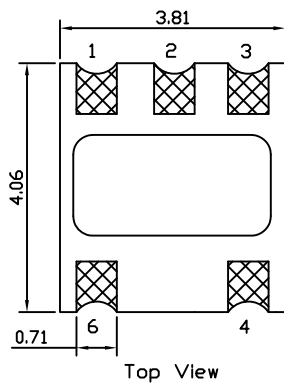


Electrical Specifications @25°C, Z₀=75Ω

| Part Number | Ω Ratio | Insertion Loss | | | Phase Unbalance (Typ) | | Amplitude Unbalance (Typ) | | DC Current | RF Power | Frequency |
|-------------|---------|----------------|---------------|---------------|-----------------------|---------------|---------------------------|---------------|------------|----------|--------------|
| | | 4.5-1000 MHz | 1000-2000 MHz | 2000-3000 MHz | 4.5-1000 MHz | 1000-2000 MHz | 4.5-1000 MHz | 1000-2000 MHz | | | |
| RFT-124SG | 1:1 | 1.0dB | 2.0dB | 3.0dB | ±2.0° | ±3.0° | ±0.7dB | ±0.5dB | 30mA | 250mW | 4.5-3000 MHz |

Note: Insertion Loss is referenced to mid-band loss, 0.5dB typ.

MECHANICAL



Unless otherwise specified all tolerances are: ±0.25 in mm

SCHEMATICS

